

Compare Module

Description

The compare module allows you to overlay, scale and directly compare chromatographic data files with each other. These comparisons, done in real time, allow the user to rapidly identify variations in a process or analysis and can also aid in "fingerprinting" unknown samples or contaminants.

Features

Graphical user interface means no command language required

Select data files or sequences by double clicking in the Explorer or dragging and dropping into the Catalog Pane.

Identify directories that contain sequences or data files using a Windows Explorer interface including network drives.

See file name and sample name on directory tree.

View and sort descriptive data file information (such as sample name, info, date acquired, method, etc.) in the Catalog Pane.

Preview, Print and export sample logs from the Catalog Pane.

Maximize views for printing or to focus on specific information.

Place samples files or directories from the Explorer Pane into the Catalog Pane by double clicking or dragging and dropping. The first sample (at the top of the Catalog Pane) is Sample1 (red icon) by default, the sample to be compared. The second sample in the Catalog Pane by default will be identified as Sample 2 (green icon).

Designate other samples as Sample1 (red icon) by right clicking on a sample in the Catalog Pane.

Designate other samples as Sample2 (green icon) by double clicking or right clicking on them in the Catalog Pane.

The chromatographic display allows the user to view the 2

selected samples overlaid or separated in the Comparison Pane.

Ability to zoom and pan chromatograms for detailed views.

Zoom in by clicking and dragging from left to right across an area in the graph.

Return to full view by clicking and dragging from right to left across any area of the graph.

In overlay mode axes can be independently manipulated in both X and Y by dragging axis tick marks to pan a sample's trace allowing the chromatograms to be offset or aligned for comparison.

Ability to subtract and display difference chromatogram along with a similarity measure called Confidence Value listed as a percentage (100% being an exact match).

Ability to normalize Y axes to the maximum peaks; useful in "fingerprinting" and identifying differences among samples.

Ability to select anchor points to align chromatograms in both Retention Time and Response.

Preview, Print, Export and Copy views in Comparison Pane.

Requirements

Compare Module requires that Chemstation be configured to generate Report.CSV files.

Operating System

Windows 95 (with Internet Explorer 4.0), Windows 98, Windows NT, Windows 2000

Hardware

5 MB free hard disk space
Minimum 32 MB RAM
Recommended 64 MB RAM)

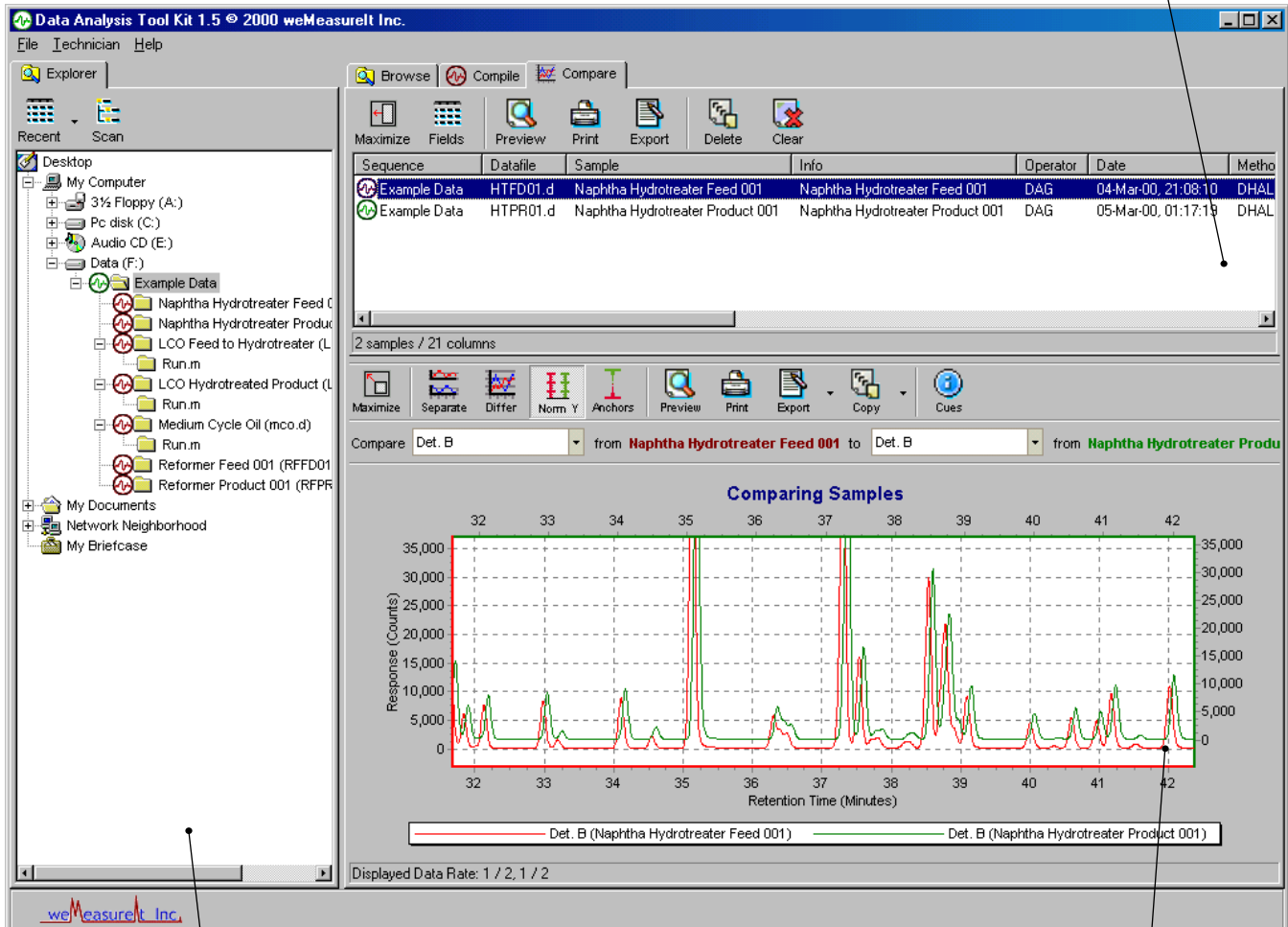
Display

Minimum 800 x 600 resolution, High Color (16 bit)
Recommended 1024 x 768 True Color (24 bit)

Compare Module

Catalog Pane

View sample information such as sample name, sample info, operator and date of collection.



Explorer Pane

Identify data files and directories on your computer or across a network. Drag and drop files or directories from here into the Catalog Pane.

Comparison Pane

Quickly view, manipulate and zoom overlaid, separated or difference chromatograms. Overlay view shown.

